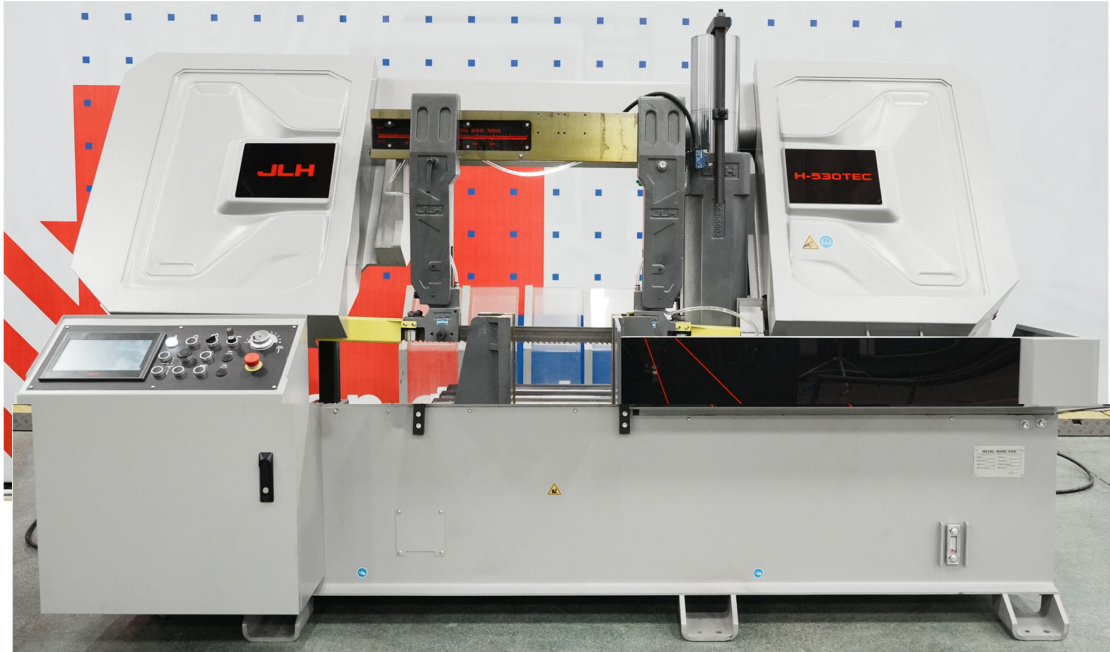


JLH H-530TEC SEMI-AUTOMATIC BAND SAWING MACHINE



Factory Complex



Factory Production movie

JLH SAWS INNOVATIVE SAWING TECHNOLOGY

Since 1983

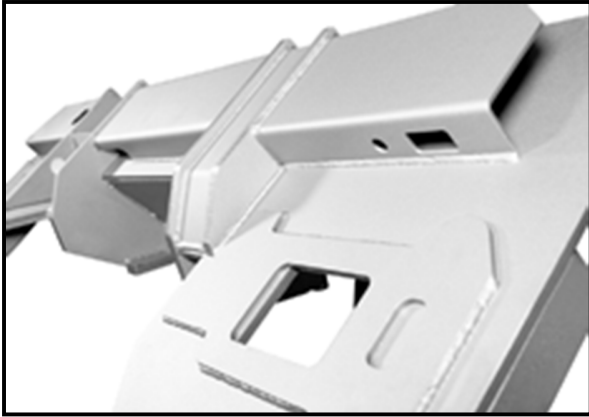
One of the world's largest metal sawing machine manufacturers JLH SAWS INT'L INC. is continuously working on Innovations and Technology. We offer the world's fastest, high-quality and technologically advanced metal cutting solutions to customers across the world since 1983. Our knowledgeable and experienced team works very closely with our customers to understand their requirements. This allows us to offer them the highest performance solutions ensuring low cost per component and optimized productivity.



Our manufacturing facility is modern and of an unseen world class in the sawing machine market. We are a vertically integrated company that manufacturers most of our parts on site. Total land covers an area of more than 80.000 square meters. Manufacturing space is more than 50.000 square meters. JLH Saws International Inc. has more than 350 employees with production capacity of more than 8.000 machines per year and growing to 12.000 machines per year.

JLH is the largest metal sawing machines brand in our home country with more than a 25% market share. We are continuing to emerge as the preferred sawing brand across the world. JLH currently exports to more than 30 countries with ongoing efforts to expand our footprint across the world.

The Future of Sawing



Saw Frame

The saw is constructed buy laser cutting the various component parts to exacting tolerances. They are then welded in place by state-of-the-art robotic welders in our welding cells. Using robots allow for precise, strong and consistent welds. This is just another way J LH Saws provide the upmost in quality and precision.

The sawbow is supported by a huge main column and good sized cylinder that carries the complete weight of the frame and is guided by a mechanical support to make sure the feeding is smoothly.



The Future of Sawing

Hydraulic Blade Tensioning

Consistent accurate tensioning is provided by an good sized hydraulic cylinder.

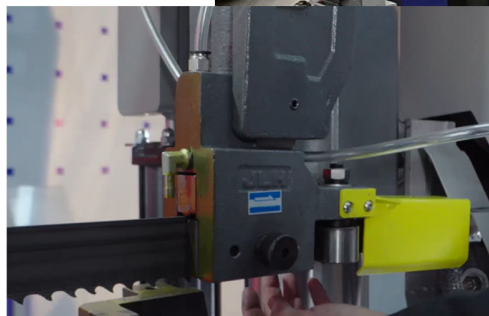


Clamping vise

The vise in the machine is a full stroke hydraulic operating vise. It has standard vise pressure regulatoin and is split so the material is clamped on both sides of the blade. It has hardened inserts to have good grip on the material. Smooth surfaced inserts are available on request when the material can't be damaged.

Guide arm & blade clamping

It is typical JLH DNA to have double enlarged excentric rollers on both sides of the guide arms to damp the vibrations on the blade above 400mm capacity. The rollers are covering 75% of the blade surface. The carbide tungsten blade guides and top guide (carbide rollers in this machine) are manually clamped.



The Future of Sawing

Gearbox and Drive motor

Unlike many bandsaw manufacturers that use a worm and gear type gearbox; JIH Saws uses a highly efficient spiral bevel gear and cylindrical gear combination reducer. The drive motor has a direct connection to the gear box eliminating the need for costly belt replacements. Drive motor is inverter controlled.



Hydraulic System

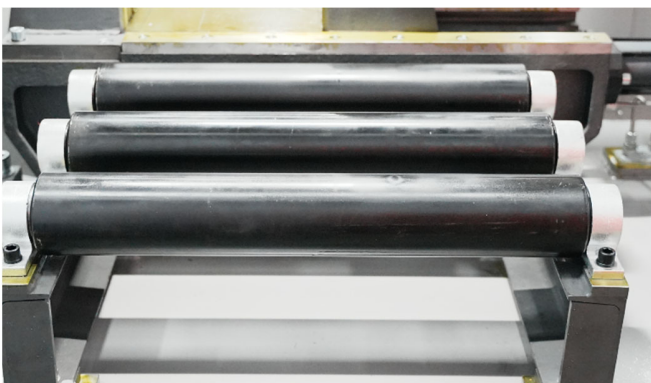
All JLH Saws use a modern and logical hydraulic system. Using the highest quality world class components for years of reliable operation. The solenoid valve base is made of aircraft grade aluminum for better heat dissipation and ease of maintenance. The valves are designed and branded for JLH by a well known global brand.

Cooling System

A large coolant tank ensures excellent working conditions for the saw blade and work piece. Electrical coolant pump provides continuously circulation during the cutting process. The saw can also be equipped with a micro-spray coolant system (MQL). The MQL system has fully adjustable coolant time & volume on it for easy control by any operator. The chip conveyor is a hollow core style controlled by a hydraulic motor.

Height limit switch

When the customer has for a shorter period on a semi-automatic saw a bit more work so things needs to be cut in series, then to gain time it would be very nice to a height limitation. This machine is standard equipped with a height limit switch on the front of the machine, so it is very easy to reach and to set or unset the height limitation.



Extra rollers

In the back of the machine bed 3 extra larger heavy duty rollers are standard installed to support better the material infeed. These rollers are driven with a double geared roller and chain. They can be operated up and down in slow speed to move the product forward and backward.

Electrical Cabinets

All electrical cabinets are built to international standards. In the electrical cabinet you can only find electrical components of global well known brands for ease of service later. Of course all necessary components can be retrieved easily from one of our global warehouses (China factory, Europe and USA). All of the components are from international known brands and in stock in our global warehouse. They are well laid out, wired neatly and labeled as-built for ease of repair.



Machine Control

The operator's control station is a good sized clear control with big push buttons for easy operation of the main machine functions. It is ergonomically located on the left front side of the machine so the operator can easily overview the cutting process and control or interfere whenever it is needed.

Different than any other semi-automatic machine, our machine is equipped with an HMI Touchscreen. So next to the well positioned physical buttons on the control station, clearly labeled for ease of operation, you can also operate the machine through the touchscreen.

Because of the adding of the touchscreen also the integration of our JLH EH-valve was made possible which replaces the traditional hydraulic dual valve system. So AI / SawMaster is on board of this machine without any extra costs added.



MACHINE SPECIFICATIONS		
MAXIMUM CUTTING CAPACITY	Round	530mm
	Square	530-530mm
	Bundle	On request
SAW BLADE	Speed	20~80 m/min (upgradable)
	Size	6.300 x 54 x 1.6mm
	Tension	Hydraulic controlled
MOTOR OUTPUT	Saw blade	7,5 kW
	Hydraulic	1.1 kW
	Coolant	0.15 kW
OIL TANK CAPACITY	Hyd. oil	40 L
	Coolant	115 L
VOLTAGE		480V / 3 Phase / 60Hz (220V optional)
BED HEIGHT		± 700 mm
MACHINE WEIGHT		± 2.600 kgs
MACHINE MEASUREMENT (L×W×H)		2980 x 1550 x 2000mm

TECHNICAL FEATURES

- Semi-Automatic dual column billet bandsaw
- Hydraulic controlled feed rate and feed pressure controls
- Easy to maintain
- Well positioned user friendly operator panel
- Heavy duty, spiral bevel gear and cylindrical gear combination reducer (direct drive)
- Head descends on a ground and chromed over-sized column with 1 cylinder
- ± 0.1mm per 100mm cutting length precision for straight cut guaranteed
- Work light
- Powered wire brush to clean the blade
- Height limit switch
- Supporting rollers in the material bed (3 pieces)
- Coolant tank with electric pump for blade lubrication and cooling

FLOOR PLAN

FLOOR PLAN

