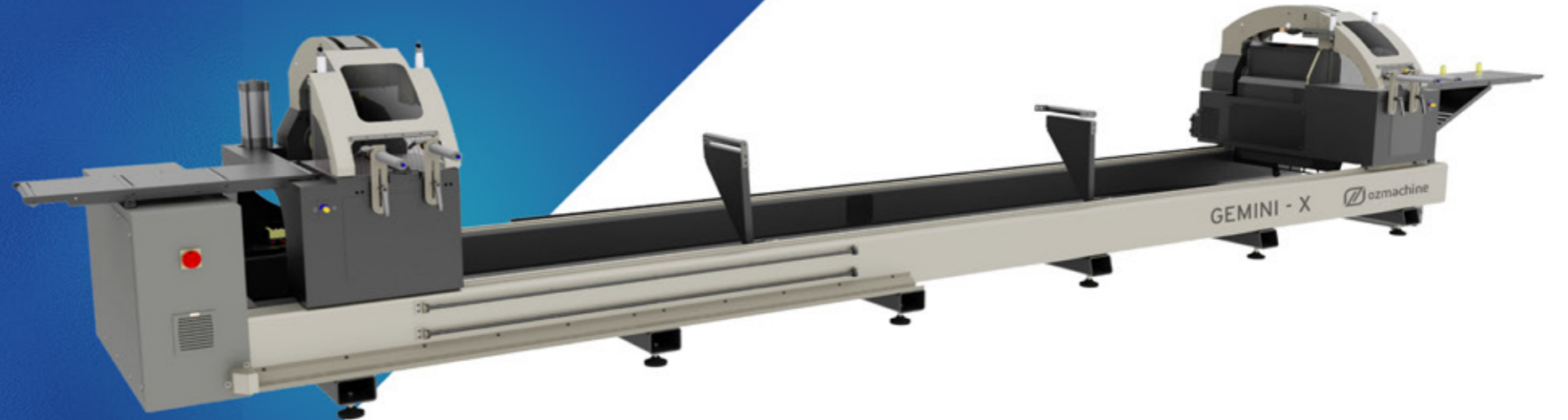


**SERVO CONTROL
POWER**



GEMINI X

**Double Head Radial
Saw Ø 550 mm
Full Automation with
3 Axis Servo Control**

1

Accurate Positioning

2

Excellent Productivity

Flexibility

4

3

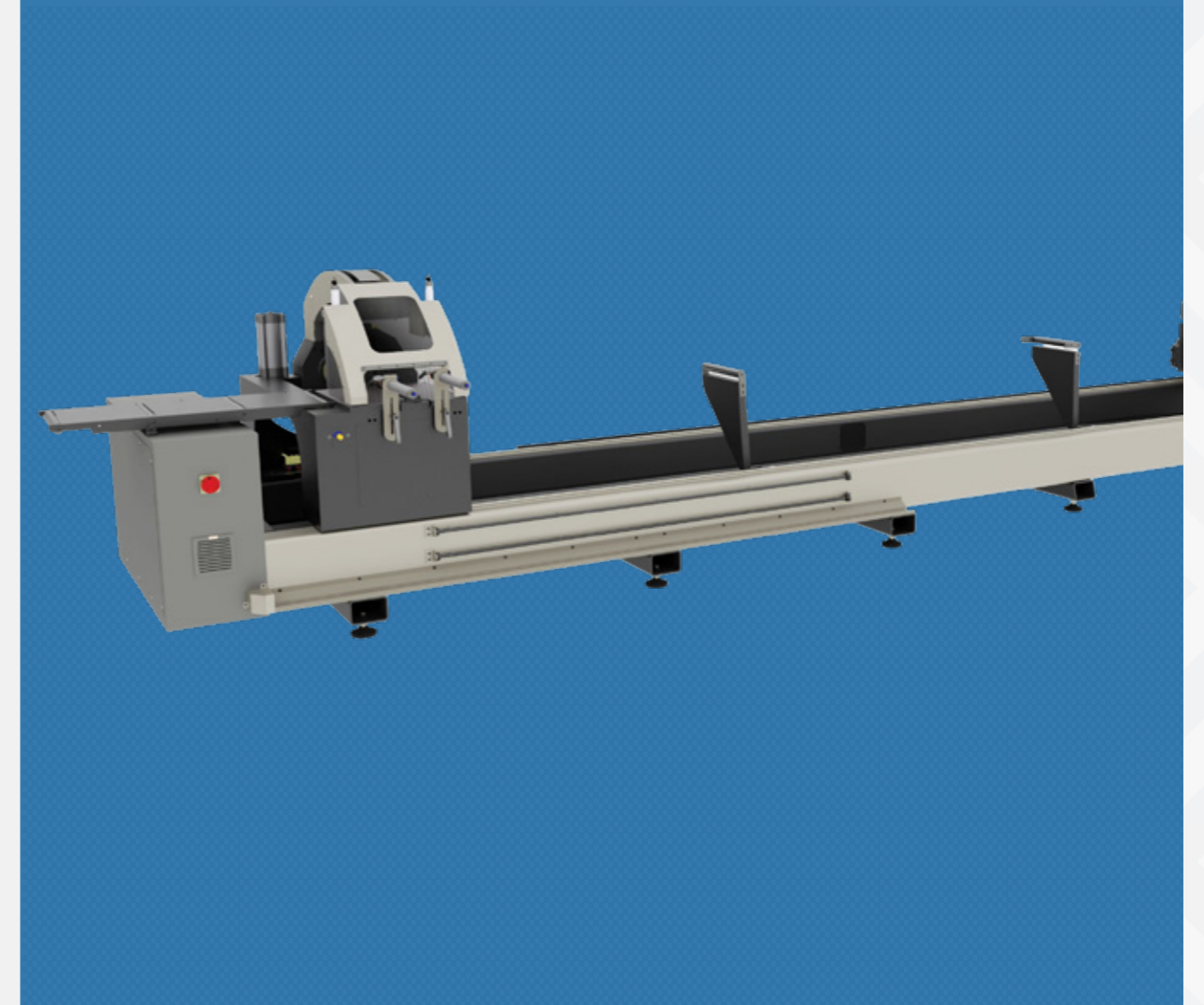
Accurate Cutting

High Capacity

5

6

No Additional Cost



- **Accurate Positioning**

Thanks to the Servo Controlled X axis and automatic tilting, operations are completed precisely and quickly.

- **Excellent productivity**

Ability to cut more profiles thanks to high-speed axis that surpass standard industry speed. X – 40 m / min.

- **Accurate Cutting**

Ability to cut with the 600 mm saw and robust saw head and intermediate profile support.

- **Flexibility**

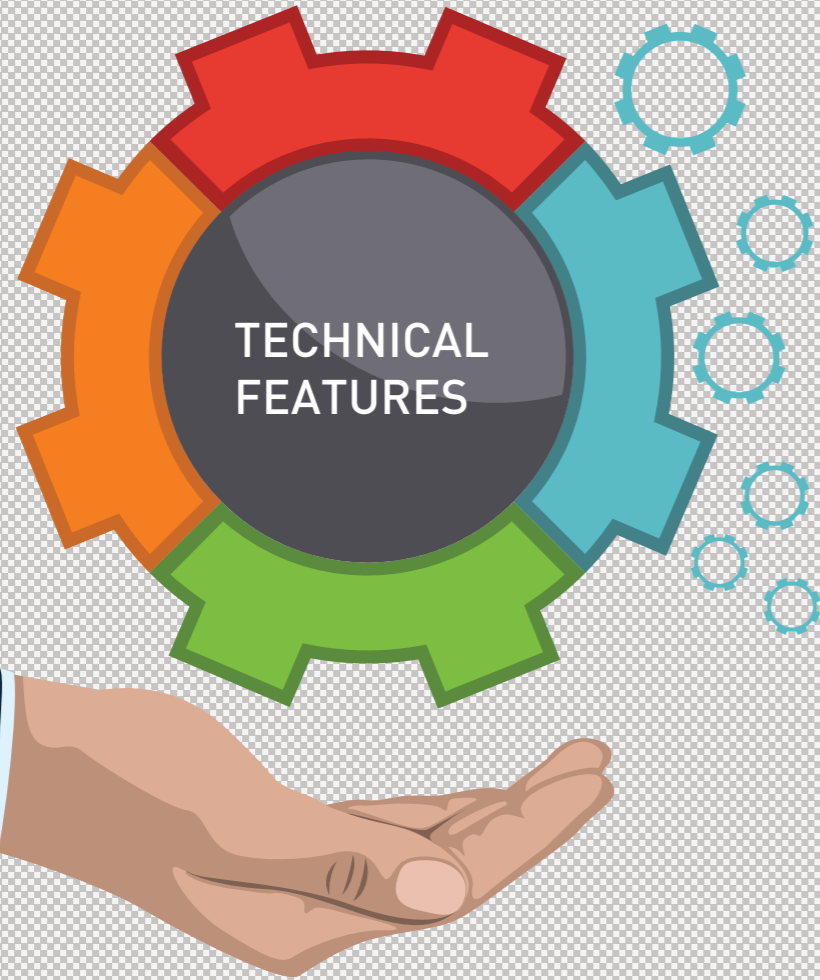
It provides the opportunity to work with all profiles thanks to any angles between -22.5° and 45°

- **High Capacity**

Equipped with a 550mm saw blade and radial cutting function, this machine provides a superior cutting capacity when compared to other machines with similar saw blade dimensions.

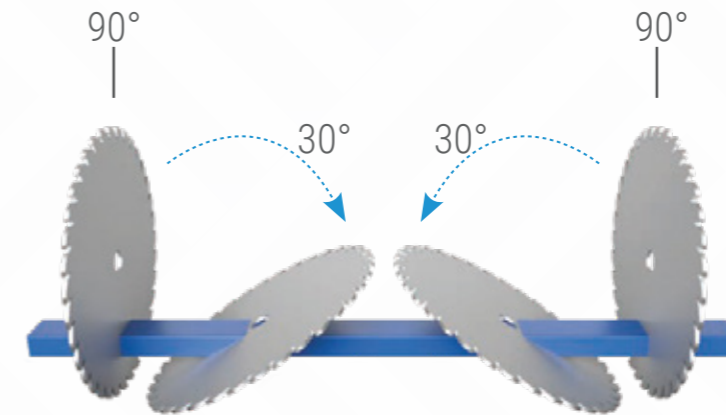
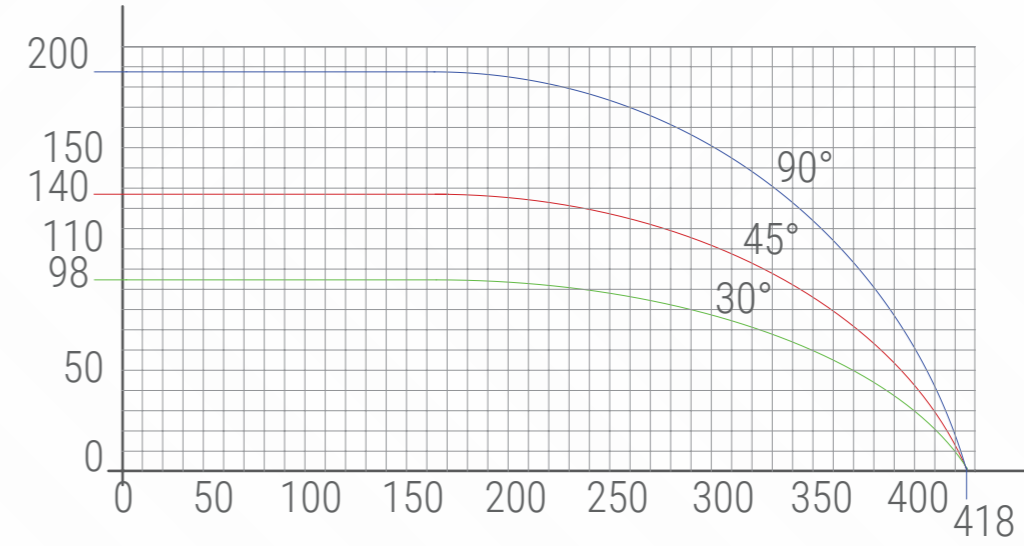
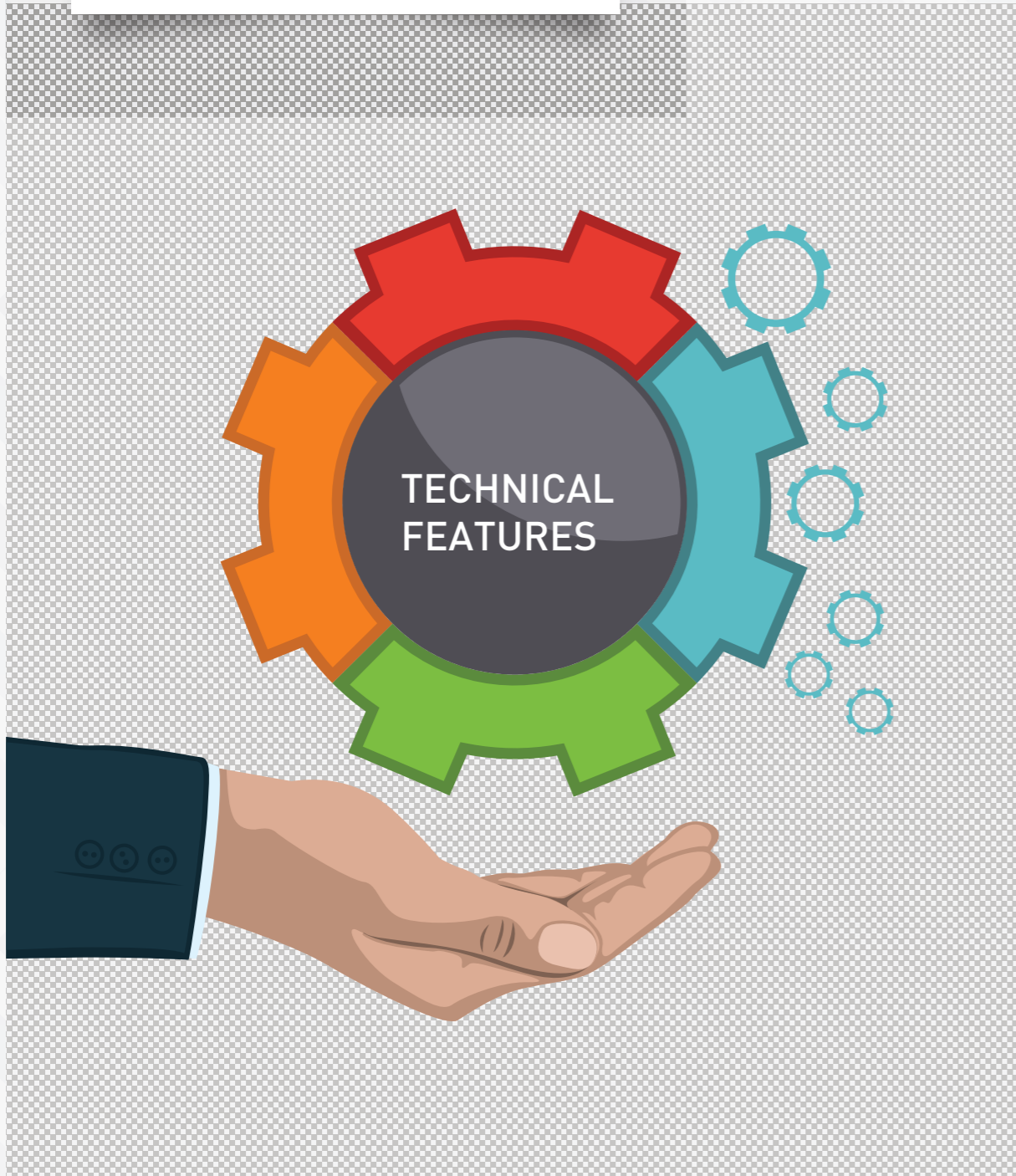
- **No Additional Cost**

Top of the range standard features including, 2x vertical clamps, Barcode reader, Manual chip evacuation, automatic measurement calculator with the molds cutting.

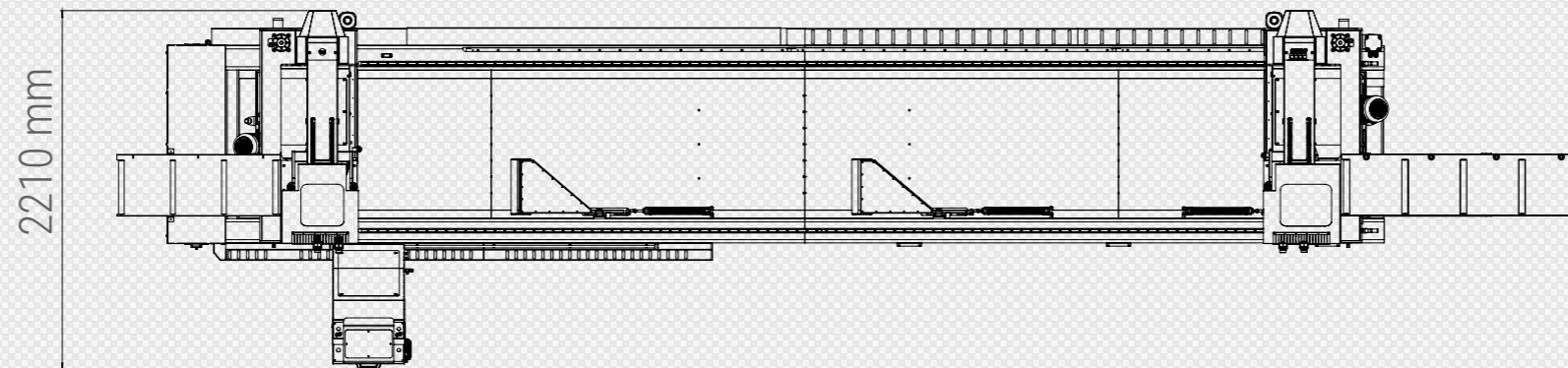
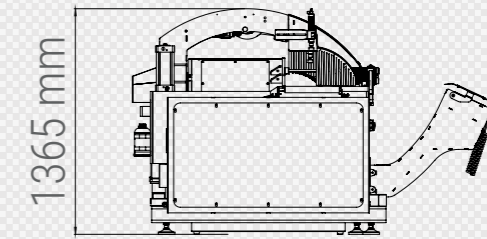
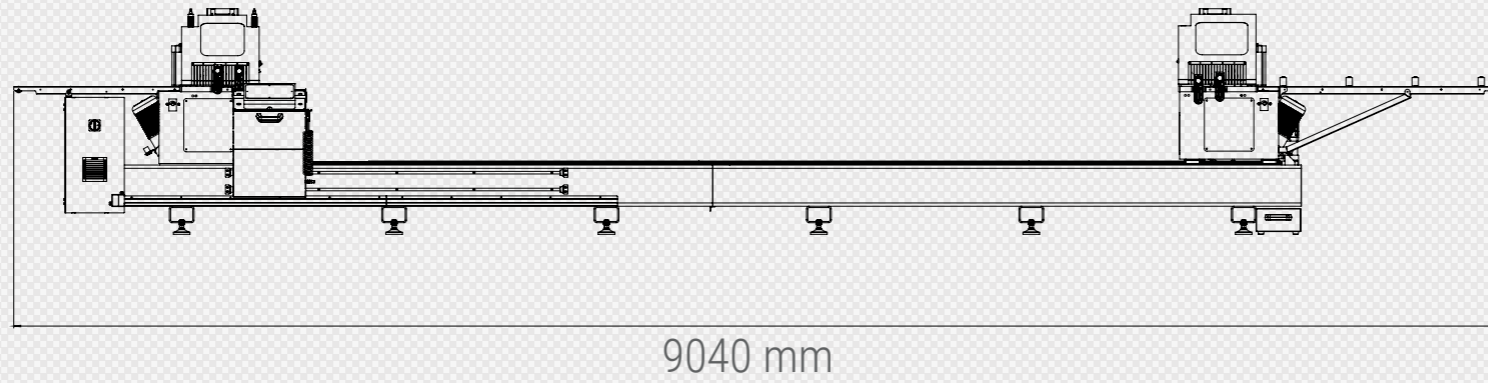


FEATURES

3 axis servo controlled radial double head radial saw GEMINI – X is ideal for cutting aluminum and PVC profiles in various angles and thickness. GEMINI – X is designed for cutting larger profiles. It provides rapid and automatic positioning of heads with servo control at any angles between 30° and 90°. Double head GEMINI - X enables simultaneous cutting of profile lengths from 460 mm to 6000 mm and eliminates barriers for cutting of 6000 mm and longer profiles. Safety is a topmost priority for GEMINI – X together with the horizontal and vertical clamps along with profile support units which improve the cutting quality.



LAYOUT



AXIS TRAVEL

Servo controlled rotation axis of head	●
Rapid positioning of heads with servo control at any angles between	30° and 90°
Hydro-pneumatic cutting feed adjustment	●
Minimum cutting length with double head (90°/45°)	460 / 460 mm
Maximum cutting length with double head (90°/45°)	6000 / 6000 mm
Maximum internal rotation angle	30°
Maximum external rotation angle	90°

POSITIONING SPEED

X axis positioning speed	40 m/min
--------------------------	----------

AIR

Pressure	6 - 8 Bar
Consumption	150 L/min

ELECTRICAL

Maximum power	9,1 kW
Voltage	400 V
Frequency	50-60 Hz

OPERATIONAL AREA

Cemented carbide saw blade	2
Saw blade diameter	550 mm
Saw blade motor power	3kW - 4HP
Optional length in X-axis	○
Cutting zone protection covers	●
Horizontal pneumatic clamps	●
Vertical pneumatic clamps	●
Manual intermediate profile support	●
Intermediate profile support (pcs)	3
Roller conveyor on moving head	●
Fixed head conveyor	●
Spray saw cooling system	●
Digital adjustment saw blade travel distance	●
Saw blade travel speed adjustment	●
Slicing mode at 90°	●
Barcode printer	●
Data transfer via remote network connection, Ethernet and USB	●
Control panel	10" Touch screen
Compatibility with powder suction system	●
Oz Machine Softcut (Cutting optimisation program)	○

● Standard ○ Optional



Power Of

***Double
Head***

