

KLS 650X850



TECHNICAL SPECIFICATIONS**KLS 650x850**

Capacity 90° (mm)	● Round	Ø 650
	■ Square	650x650
	— Rectangle	650x850
Capacity 90° (mm)	Maximum Bundle Cutting	Ø 650
	Minimum Bundle Cutting	Ø 325
	Vice Minimum Closing	300
	Vice Maximum Opening	850
	Vice Height	650
Motor	Blade Drive	5,5 kW
	Hydraulic Pump	3 kW
	Coolant Pump	0,12 kW
	Feeding Servo Motor	1,5 kW
	Swarf Conveyor	0,18 kW
Blade Size	8200 x 54 x 1,6 mm	
Coolant Tank Capacity	70 lt	
Hydraulic Tank Capacity	36 lt	
Feeding Height	640 mm	
Height-Width-Length	2700 x 1500 x 4100 mm	
Weight	8500 kg	

STANDARD SPECIFICATIONS

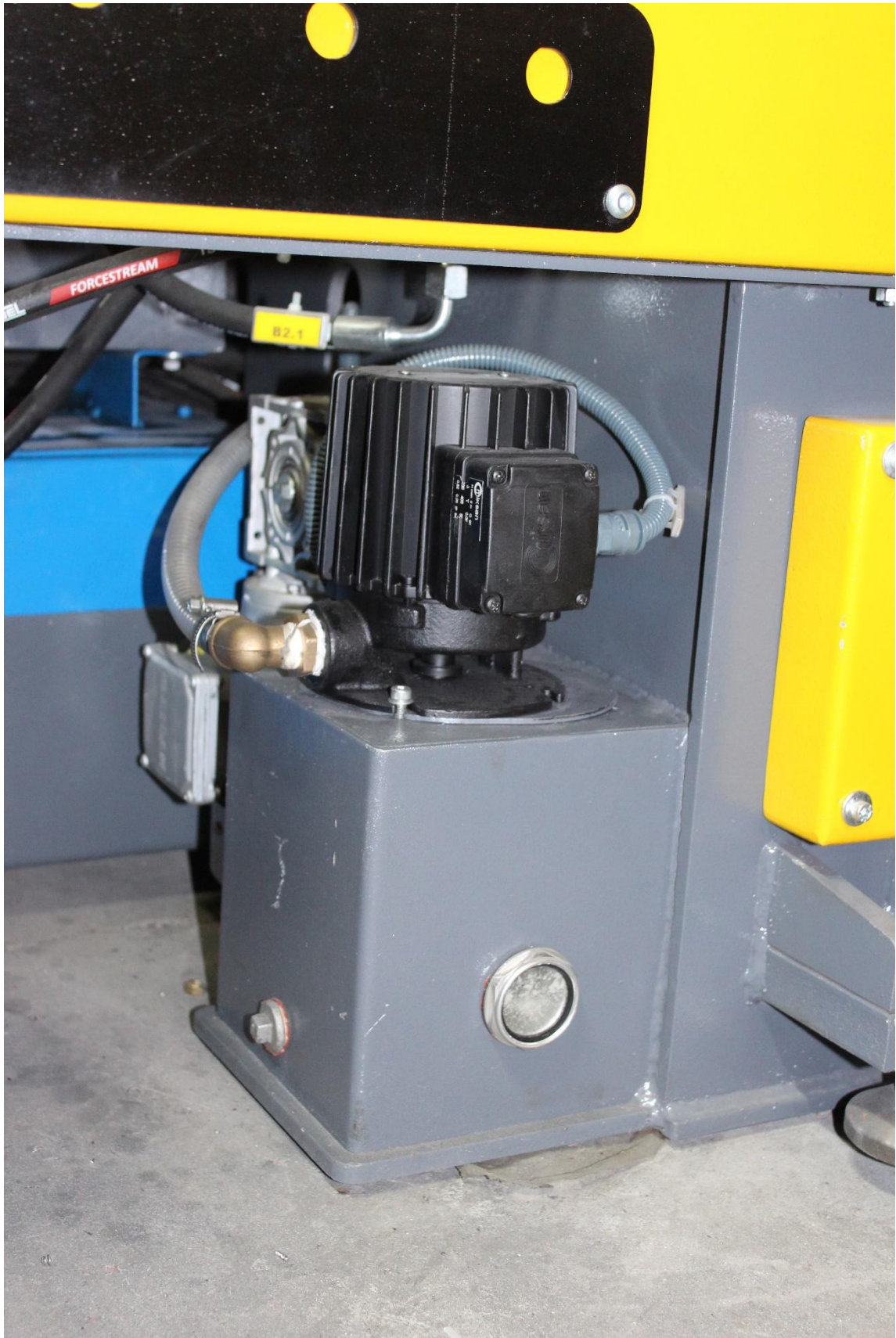
Swarf Brush
Hydraulic Blade Guide
Hydraulic Vice
Hydraulic Blade Tension
Hydraulic Upper Clamp on Cutting Zone and Feeding Vices
7" PLC TouchScreen
Blade Breakage Switch / Stop System
Arm Moving System with Vice
Led Lighting
Chip Conveyor
Swarf Carrying
Double Roller Table (1 pcs)
Emergency Wire Around the Feeding Vice

OPTIONAL SPECIFICATIONS

Laser Line
Lubrication Mist
V-Shape Vices Covered with Polyurethane for Hexagonal Bundles
Curve Cutting Detecting Sensor
Extra Double Roller Table



**LABELING ACCORDING TO EURO
STANDARDS**



COOLANT PUMP WITH MORE POWER



AUTOMATIC OIL LUBRICATION SYNCED
WITH PLC



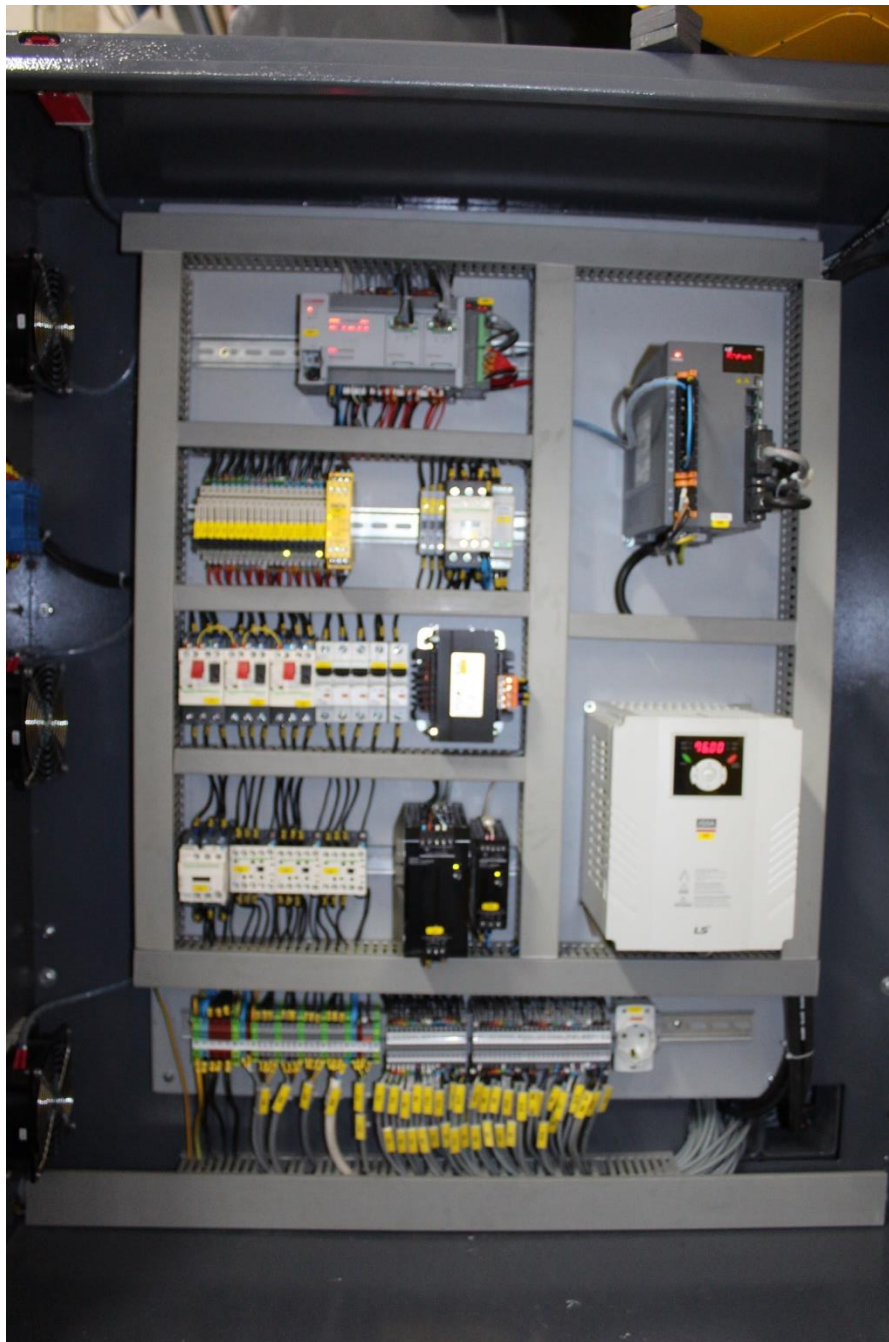
CONTROL BUTTONS ON FEEDING VICE FOR EASY USE.



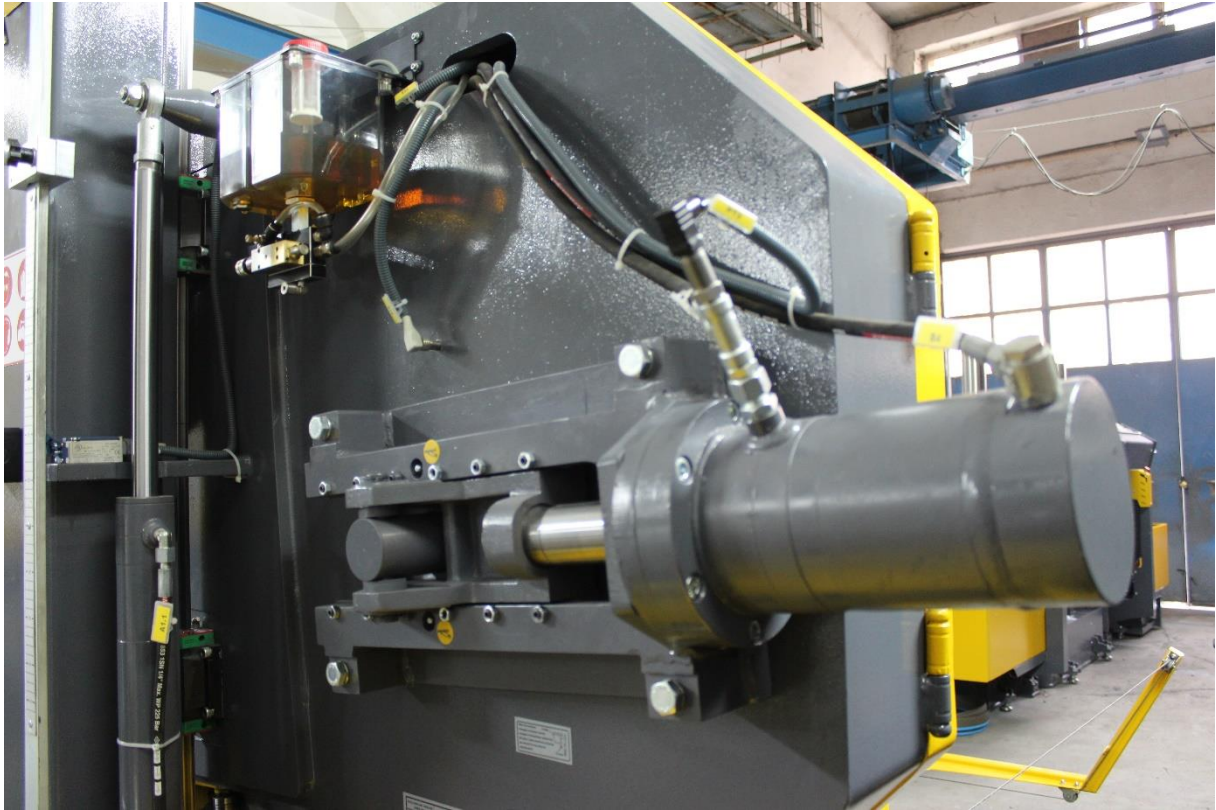
CHIP CONVEYER



5,5 KW POWERED MOTOR WITH GEARBOX



HIGH QUALITY ELECTRICAL BOX
ACCORDING TO EURO STANDARDS



**RIGID HYDRAULIC BAND TENSIONING WITH
BAND BREAKAGE DETECTOR**



LUBRICATION MIST SPRAY INSTEAD OF
COOLANT LIQUID
(OPTIONAL)





- 7" TOUCHSCREEN CONTROL PANEL
- SENSITIVE DOWNFEED - REXROTH



**GUIDE ROLLERS ADJUSTABLE TO BUNDLE
SHAPE**



HEIGHT ADJUSTABLE V SHAPE VICE
COVERED WITH POLYURETHANE THAT
PREVENTS VIBRATION OF BUNDLE
(OPTIONAL)



SAFETY WIRE WITH SWITCH



- PULLEY WHEEL HARDENED WITH INDUCTION
- CONTROL BUTTONS FOR EASY BAND REPLACEMENT (GREEN BUTTONS)
- SWARF BRUSH POWERED BY PULLEY WHEEL

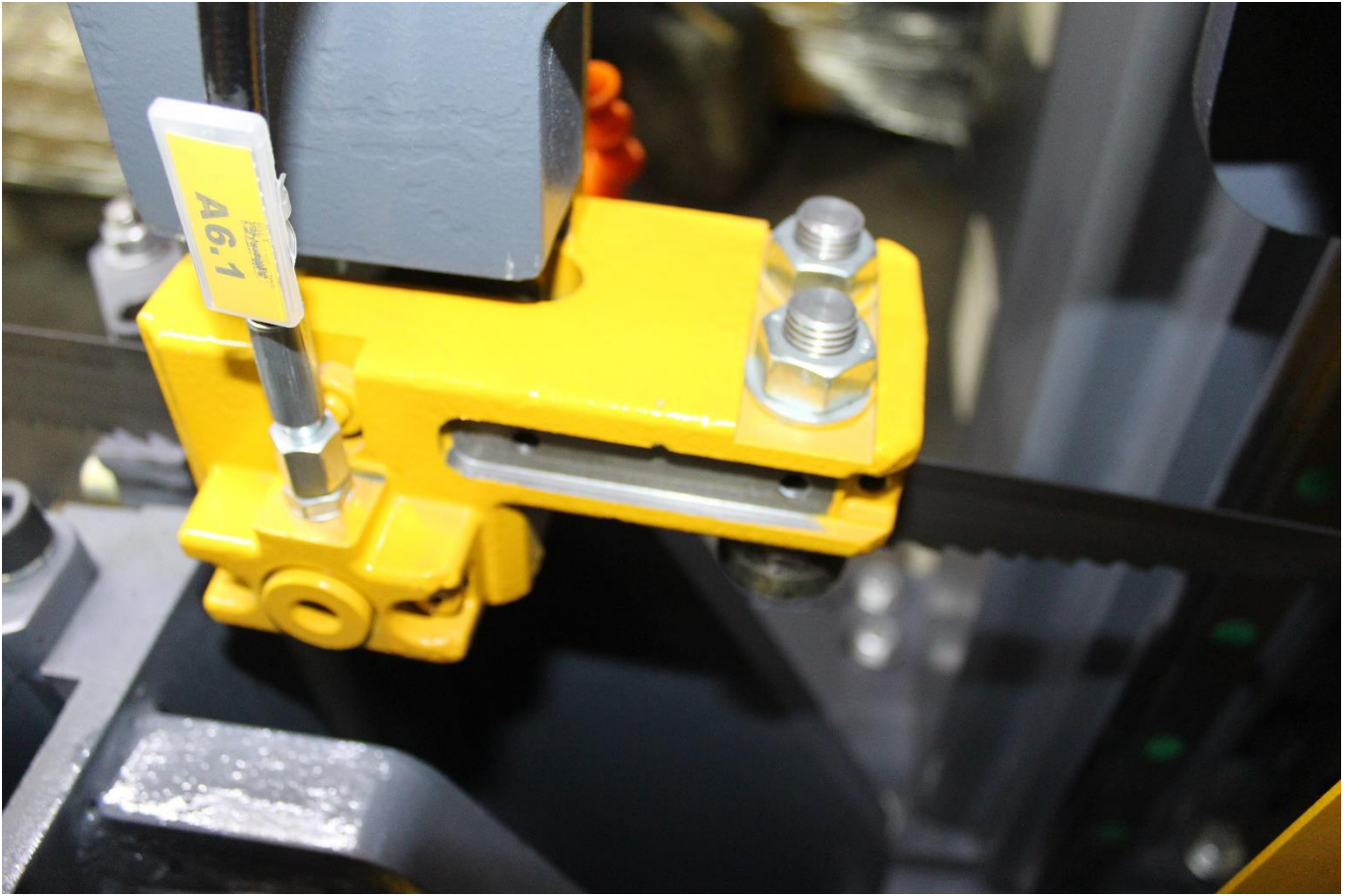




LINEAR SLIDES FOR BODY MOVING UP AND
DOWN



HYDRAULIC UNIT LABELED ACCORDING TO EURO STANDARDS



HYDRAULIC BAND GUIDING



HYDRAULIC VALVE TO CLOSE/OPEN UPPER CLAMP



CURVE CUTTING SENSOR
(OPTIONAL)



**BAND ARM MOVING WITH VICE FOR
PERFECT CUTTING SOLUTION**