

KLS 550X700



TEKNİK ÖZELLİKLER
TECHNICAL SPECIFICATIONS

KLS 550X700

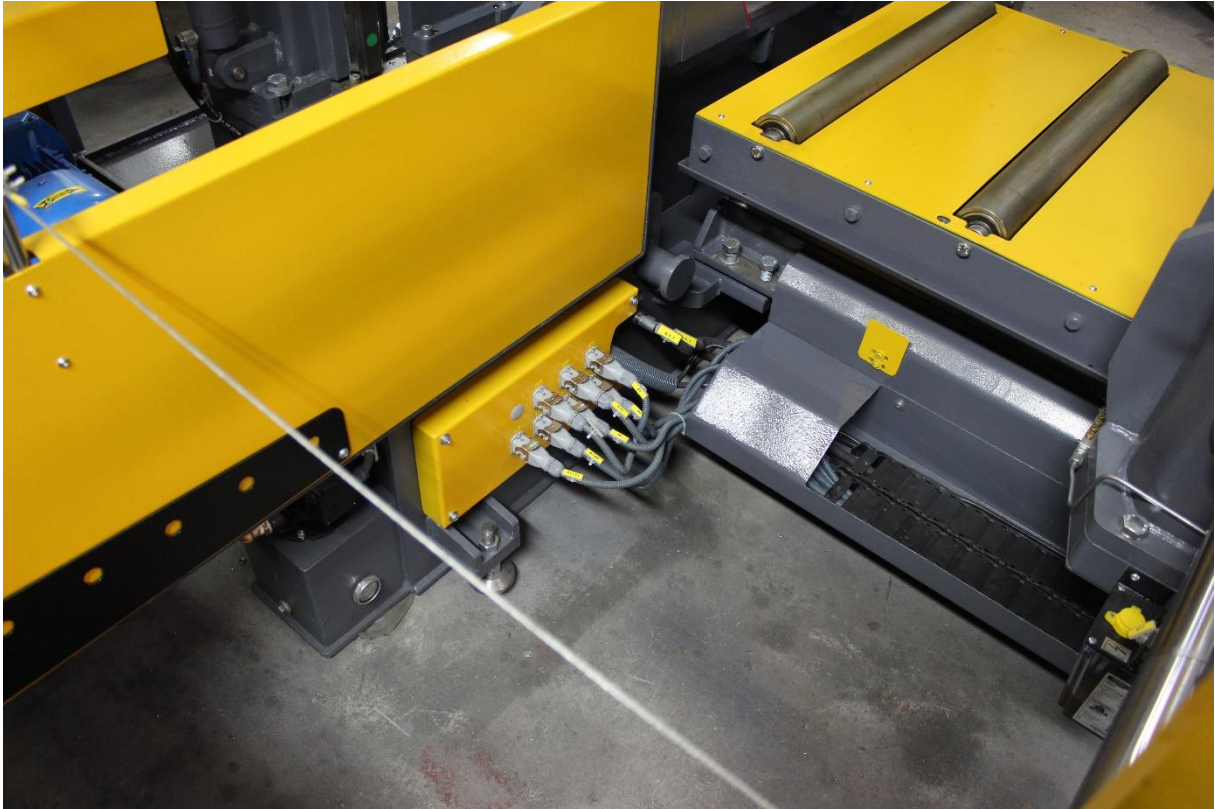
Kapasite 90° (mm) Capacity 90° (mm)	● Yuvarlak Round ■ Kare Square — Dikdörtgen Rectangle	Ø 570 550x550 550x700
Paket Kesim (mm) Bundle Cutting (mm)	Maksimum Maximum Minimum Minimum	Ø 550 Ø 275
Motor Motor	Ana Motor Blade Drive Hidrolik Motor Hydraulic Pump Soğutucu Motor Coolant Pump Sürücü Motor Feeding Motor Konveyör Motor Swarf Conveyor	4 kW 1,1 kW 0,12 kW 1,5 kW 0,18 kW
Şerit Testere Ölçüsü Blade Size		7250 x 41 x 1,3 mm
Kesme Hızları (m/dak) Band Speed (m/min)		18 - 90 m/dak
Malzeme Besleme Yüksekliği Feeding Height		530 mm
Mengene Maksimum Açma Vice Maximum Opening		700 mm
Mengene Minimum Kapama Vice Minimum Closing		220 mm
Mengene Yükseklik Vice Height		550 mm
Yükseklik-Genişlik-Uzunluk Height-Width-Length		2600 x 1300 x 3700 mm
Ağırlık Weight		6100 kg

STANDART ÖZELLİKLER
STANDARD SPECIFICATIONS

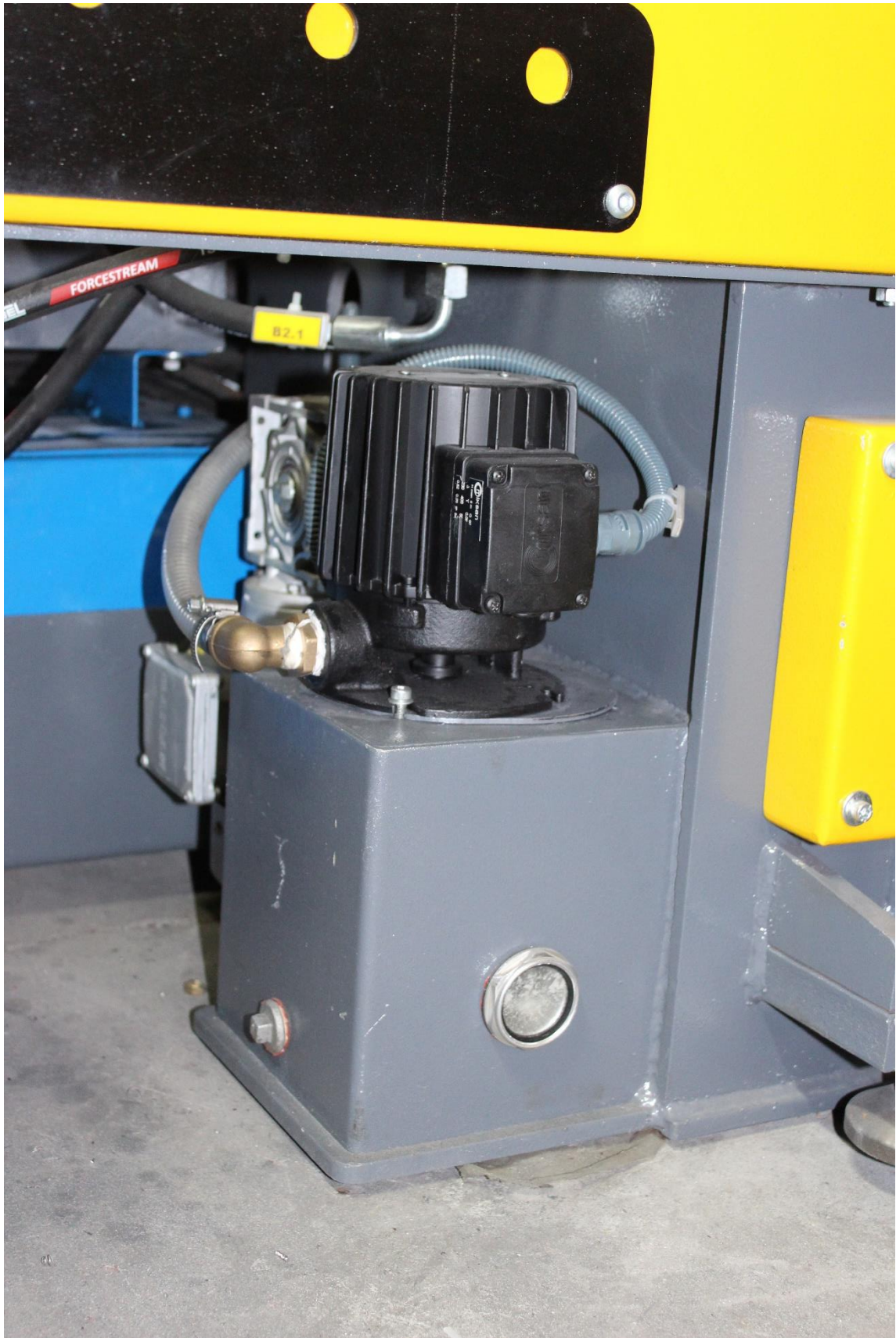
Üst Baskı Sistemi Upper Clamp System
Talaş Temizleme Fırçası Swarf Brush
Hidrolik Elmas Sıkma Hydraulic Blade Guide
Hidrolik Mengene Hydraulic Vice
Hidrolik Şerit Germe Hydraulic Blade Tension
Şerit Koptuğunda Algılama / Durma Sistemi Blade Breakage Switch / Stop System
Mengene Tahrikli Kol Hareket Sistemi Arm Moving System with Vice
Aydınlatma Lambası Led Lighting
Talaş Konveyörü Swarf Conveyor
Talaş Arabası Swarf Carrying
1400 mm stroklu Sürme Sehpa 1400 mm Feeding Shuttle
Çift Rulolu Sehpa Double Roller Table
Malzeme Bitti Sensörü Material End Detector

OPSİYONEL ÖZELLİKLER
OPTIONAL SPECIFICATIONS

Lazer İşaretleyici Laser Line
Püskürtme Yağlama Lubrication Mist
Kurtağzı Mengene Çenesi V Shape Vice
Çift Rulolu Ek Sehpa Extra Double Roller Table



LABELING ACCORDING TO EURO
STANDARDS



COOLANT PUMP WITH MORE POWER



**AUTOMATIC OIL LUBRICATION SYNCED
WITH PLC**



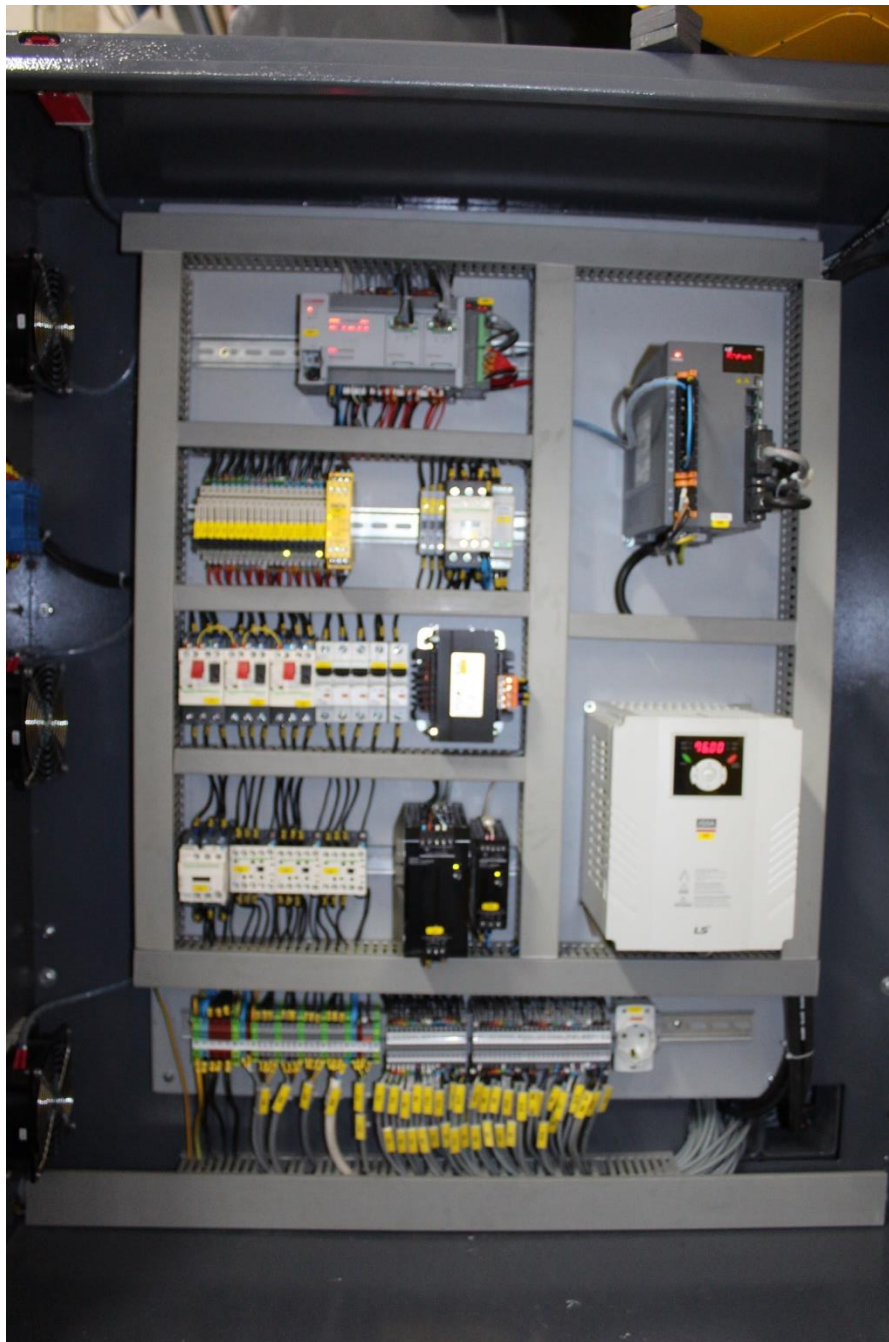
CONTROL BUTTONS ON FEEDING VICE FOR EASY USE.



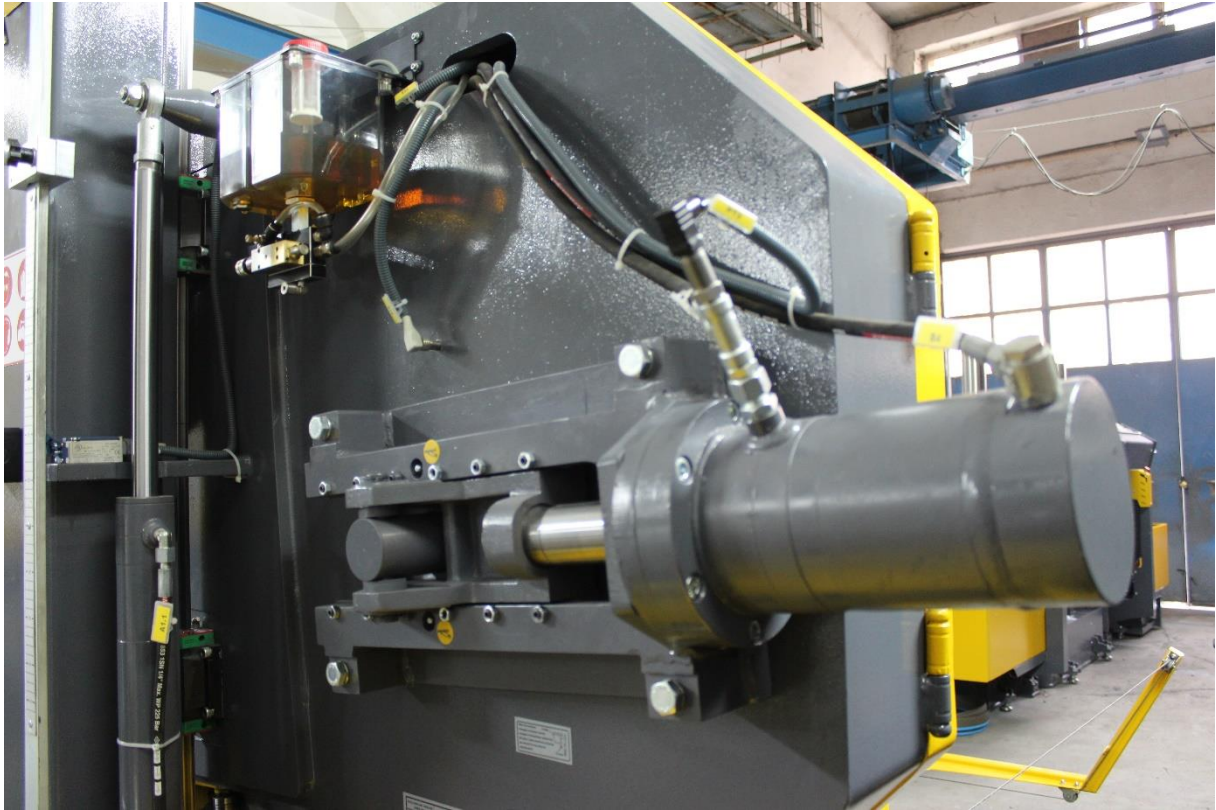
CHIP CONVEYER



4 KW POWERED MOTOR WITH GEARBOX



HIGH QUALITY ELECTRICAL BOX
ACCORDING TO EURO STANDARDS



**RIGID HYDRAULIC BAND TENSIONING WITH
BAND BREAKAGE DETECTOR**



LUBRICATION MIST SPRAY INSTEAD OF
COOLANT LIQUID
(OPTIONAL)





- 7" TOUCHSCREEN CONTROL PANEL
- SENSITIVE DOWNFEED - REXROTH



**GUIDE ROLLERS ADJUSTABLE TO BUNDLE
SHAPE**



HEIGHT ADJUSTABLE V SHAPE VICE
COVERED WITH POLYURETHANE THAT
PREVENTS VIBRATION OF BUNDLE
(OPTIONAL)



SAFETY WIRE WITH SWITCH



- PULLEY WHEEL HARDENED WITH INDUCTION
- CONTROL BUTTONS FOR EASY BAND REPLACEMENT (GREEN BUTTONS)
- SWARF BRUSH POWERED BY PULLEY WHEEL

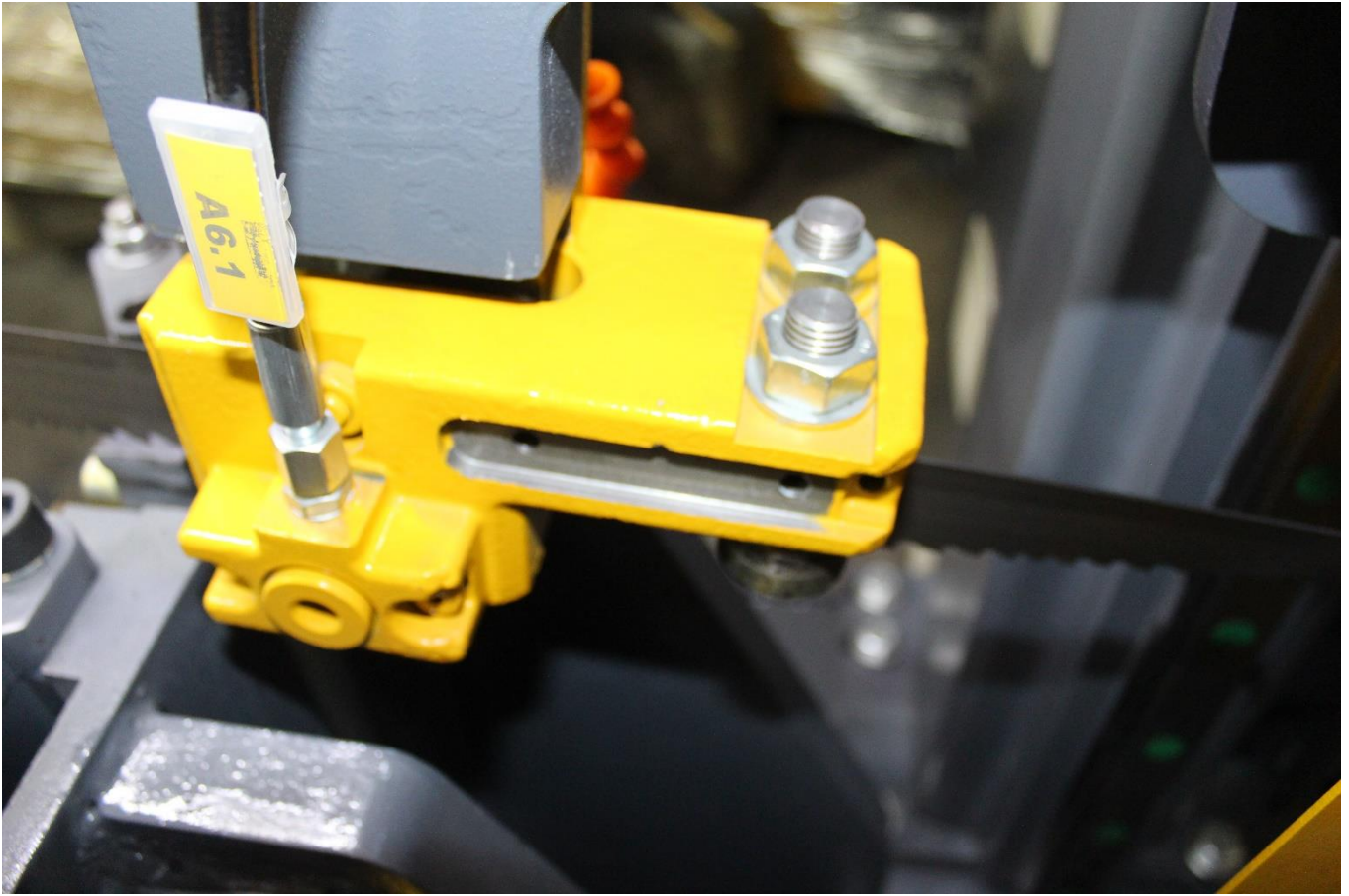




LINEAR SLIDES FOR BODY MOVING UP AND
DOWN



HYDRAULIC UNIT LABELED ACCORDING TO EURO STANDARDS



HYDRAULIC BAND GUIDING



HYDRAULIC VALVE TO CLOSE/OPEN UPPER CLAMP



CURVE CUTTING SENSOR
(OPTIONAL)



**BAND ARM MOVING WITH VICE FOR
PERFECT CUTTING SOLUTION**