

EVERISING S4633SA

EVERISING

DATA SHEET



'THE UK'S BEST SELLING BANDSAWS

Proven performance from a world leading producer

460MM X 330MM CAPACITY



R/H mitre cuts to 45 degrees
L/H mitre cuts to 60 degrees

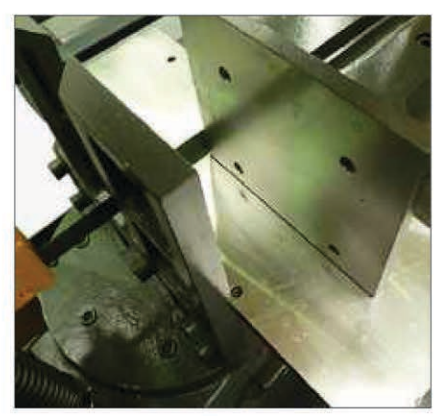
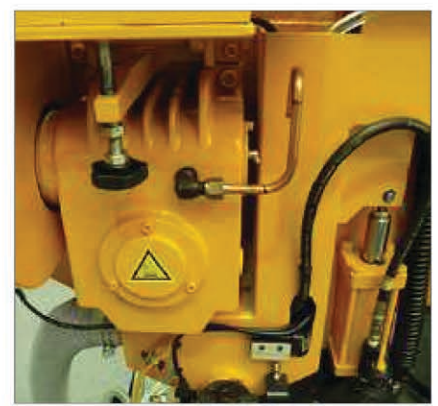
FEATURES

- hydraulic main vice
2 way swing head easy mitre
wash down hose
blade cleaning brush
four blade speeds
blade breakage detection and shut off
2 year parts warranty (12 months on site labour)
Replaceable cutting table
precise hydraulic downfeed control

TWO WAY MITRE HORIZONTAL BANDSAW

DESIGNED FOR...

GENERAL FABRICATION INCLUDING MITRE CUTTING OF 305mm BEAMS TOGETHER WITH STRUCTURAL STEEL PRODUCTS. THESE CLASS LEADING MACHINES OFFER UNBEATABLE PERFORMANCE, RELIABILITY AND VALUE.



# TECHNICAL DATA

MODEL		S-4633SA	S-6240SA	S-6235HA
CAPACITY	90° ● ● ● (WXH)	330mm 460 x 305mm	400mm 620 x 400mm	350mm 620 x 350mm
	45° ● ● ● (WXH)	305mm 305 x 305mm	400mm 420 x 400mm	350mm 420 x 350mm
	60° ● ● ● (WXH)	220mm 250 x 220mm	300mm 290 x 400mm	300mm 290 x 350mm
BLADE SPEED		25, 45, 70, 100m/min	20, 45, 70, 100m/min	20 - 100m/min
MOTOR	BLADE DRIVE	2.2 kw (3HP)	3.7 kw (5 HP)	3.7 kw (5 HP)
	HYDRAULIC PUMP	0.4kw (1/2 HP)	0.75 kw (1HP)	0.75 kw (1HP)
	COOLANT PUMP	0.1kw (1/8 HP)	0.1 kw (1/8 HP)	0.1 kw (1/8 HP)
BLADE SIZE		4115 x 27 x 0.9mm	4900 x 34 x 1.1mm	4900 x 34 x 1.1mm
BLADE TENSION		Manual	Hydraulic	Hydraulic
INDEX LENGTH	SINGLE FEED			600mm
	MAX INDEX TIMES			9
ANGEL SWIVEL			Manual	
ANGEL DISPLAY			Angle Scale	
TABLE HEIGHT		770mm	830mm	830mm
VICE CLAMPING TYPE		Rack Type	Hydraulic (Full Stroke 2 Stop)	
MACHINE WEIGHT		800 kgs	1500 kgs	2200kgs
FLOOR SPACE (W X D)		2100mm x 2050mm	2385mm x 2580mm	2350mm x 3400mm

**OFFERING...**

**LEVELS OF PRECISION AND  
RELIABILITY AT MARKET LEADING  
PRICES.**

WWW.ADDISONSAWS.CO.UK

**01384 264 950**

**Addison**

